

PACIFIC MPS SOLUTIONS

ADVENTUROUS GROWTH PORTFOLIO

GBP Strategy Sheet

AS AT 31 MAY 2024

OVERVIEW

Investment objective

The Adventurous Growth Portfolio aims to achieve capital growth, with a bias towards equity market exposure.

Suitability

Designed for investors who seek investment growth over not less than 5 years and who are prepared to accept the possibility of larger short-term capital losses to achieve strong market returns.

Inception date

30 Mar 2012

Asset allocation profile

The portfolio can invest across all asset classes, but it is limited to a maximum equity weighting of 100%.

Risk profile

The portfolio adopts a higher approach to risk and it is anticipated its volatility will not exceed 100% of global market equity volatility.

Benchmarks and Return Objective

ARC Steady Growth PCI: 60-80% | CPI +4%

CHARGES INFORMATION

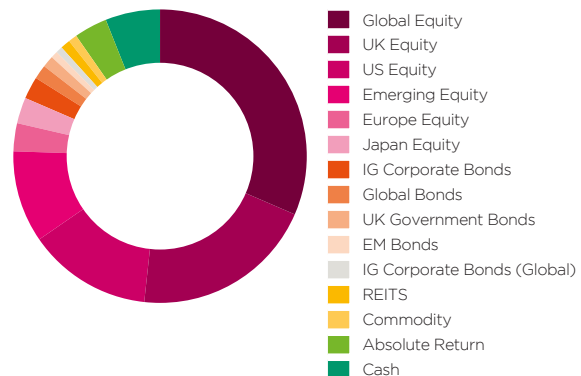
DFM	Transaction Costs	Ongoing Charges Figure	Total Charges*
0.00%	0.13%	0.71%	0.84%

*Total Charges includes all ongoing fund charges and transaction costs. There is no DFM fee for this portfolio. Total excludes adviser and platform charges.

PORTFOLIO HOLDINGS OVERVIEW

Current Asset Allocation (%)

Equity	81.5
Fixed Income	6.8
Alternatives	2.0
Diversifying Assets	3.7
Cash	6.0
Total	100.0



Please note:

The full look through allocation shows the combined weightings for the Efficient and Dynamic Strategies.

Fund Holdings in Detail (%)

Sector	Security Name	Currency	Weightings
Dynamic Overlay Strategy	Multi Asset Accumulator - Plus Fund Overlay GBP A	GBP	50.0%
Global Equity	Vanguard FTSE Developed World ex-UK Equity Index Institutional Plus	GBP	24.8%
UK Equity	L&G UK Index Trust	GBP	12.6%
Emerging Equity	Vanguard Emerging Markets Stock Index Institutional Plus	GBP	4.6%
IG Corporate Bonds	L&G Sterling Corporate Bond Index	GBP	2.4%
Global Bonds	Vanguard Global Bond Index Institutional Plus Hedged	GBP	1.8%
UK Government Bonds	L&G All Stocks Gilt Index Trust	GBP	1.3%
UK Government Bonds	L&G All Stocks Index Linked Gilt Trust	GBP	0.6%
Cash	Sterling Cash	GBP	2.0%
Total			100.0%

FULL LOOK THROUGH HOLDINGS (%)

The full look through allocation shows the combined holdings and weightings for the Dynamic and Efficient strategies. The Dynamic exposure is actively managed, investing across passive, active, direct and factor strategies.

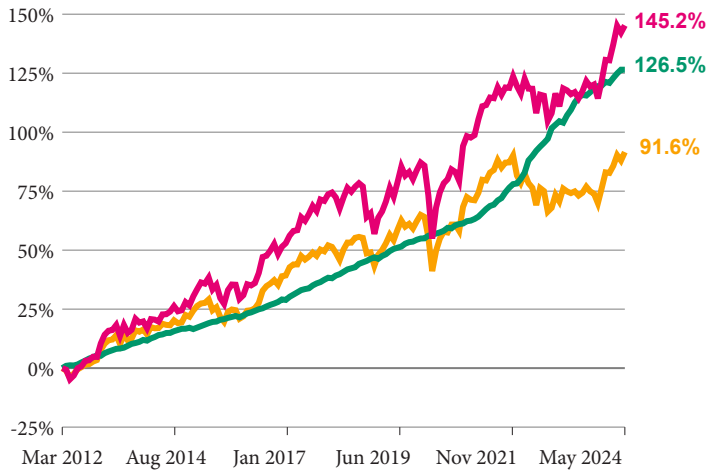
Asset Class	Sub Class	%	Holding	%	Access	Strategy
Equity: 81.5%	Global Equity	31.5	Vanguard FTSE Developed World ex-UK Equity Index Institutional Plus	26.96	Passive	Efficient
			iShares Edge MSCI World Quality ETF	1.73	Factor	Dynamic
			Pacific Longevity and Social Change Fund	1.67	Active	Dynamic
	UK Equity	20.2	iShares Edge MSCI World Value	1.14	Factor	Dynamic
			L&G UK Index Trust	13.35	Passive	Efficient
	US Equity	13.7	iShares Core FTSE 100	6.88	Passive	Dynamic
			SPDR S&P 500 ETF	3.89	Passive	Dynamic
			Vanguard S&P 500 UCITS ETF	3.40	Passive	Dynamic
			iShares Core S&P 500 ETF	2.62	Passive	Dynamic
			Pacific North American Opportunities	1.99	Active	Dynamic
			X S&P 500 EQUAL WEIGHT	0.96	Factor	Dynamic
			iShares Edge MSCI USA Value	0.81	Factor	Dynamic
	Emerging Equity	10.1	Vanguard Emerging Markets Stock Index Institutional Plus	4.21	Passive	Efficient
			Pacific North of South EM All Cap	2.02	Active	Dynamic
			HSBC Hang Seng Tech UCITS ETF	1.92	Passive	Dynamic
			Pacific North of South EM Income Opportunities	1.35	Active	Dynamic
	Europe Equity	3.1	iShares edge MSCI Erp Value	1.81	Factor	Dynamic
			Vanguard FTSE Dev Eurp Ex UK	1.28	Passive	Dynamic
	Japan Equity	2.9	Vanguard FTSE Japan UCITS	2.74	Passive	Dynamic
AVI Japan Opportunity Trust			0.13	Active	Dynamic	
Fixed Income: 6.8%	IG Corporate Bonds (Global)	3.2	L&G Sterling Corporate Bond Index	2.04	Passive	Efficient
			XTrackers USD Corporate Bond ETF	0.73	Passive	Dynamic
			Pacific Coolabah Global Active Credit	0.35	Active	Dynamic
			iShares USD Corp Bond	0.06	Passive	Dynamic
	Global Bonds	1.6	Vanguard Global Bond Index Institutional Plus Hedged	1.57	Passive	Efficient
	UK Government Bonds	1.3	L&G All Stocks Gilt Index Trust	0.94	Passive	Efficient
EM Bonds - Hard Currency	0.8	L&G All Stocks Index Linked Gilt Trust	0.34	Passive	Efficient	
		Tabula Haitong Asia High Yield ETF	0.56	Passive	Dynamic	
Alternatives: 2.0%	REITS	1.1	Xtrackers II USD EM Bond UCITS ETF	0.20	Factor	Dynamic
			iShares UK Property ETF	0.77	Passive	Dynamic
			Riverstone Energy Ltd	0.19	Direct	Dynamic
Commodity	1.0	Tritax Big Box REIT	0.11	Active	Dynamic	
Diversifying Assets: 3.7%	Absolute Return	1.9	iShares Bloomberg Commodity ETF	0.95	Passive	Dynamic
			AQR Managed Futures UCITS	0.86	Active	Dynamic
	Diversifying Risk Assets	1.8	Pacific GIO Macro Rates	0.67	Active	Dynamic
			AQR Style Premia UCITS	0.35	Active	Dynamic
			PAM Rates 2s10s Steepener	0.44	Direct	Dynamic
			FX Carry Factor	0.28	Direct	Dynamic
			FX Value Factor	0.27	Direct	Dynamic
Rates Momentum Factor	0.27	Direct	Dynamic			
Rates Carry Factor	0.27	Direct	Dynamic			
Rates FRB Factor	0.26	Direct	Dynamic			
Cash: 6.0%	Cash	6.0	Cash	6.03	Direct	

PERFORMANCE AND RISK OVERVIEW

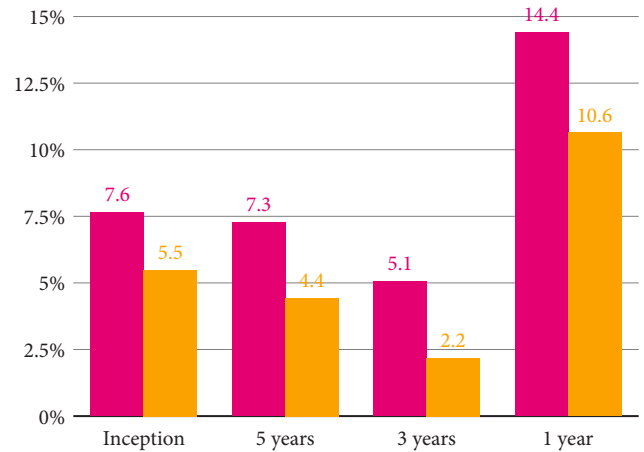
Adventurous Growth Portfolio GBP from 30 Mar 2012 to 31 May 2024

● Adventurous Growth Portfolio GBP ● ARC Steady Growth PCI: 60-80% ● CPI +4%

Cumulative Performance (%)



Period Returns (%)



Annual returns (%)

	2017	2018	2019	2020	2021	2022	2023	2024
Portfolio	14.7%	-9.7%	19.3%	6.0%	12.8%	-5.7%	9.3%	6.3%
ARC Index	9.4%	-5.6%	15.0%	4.6%	10.2%	-10.2%	7.2%	4.7%
CPI +4%	7.1%	6.2%	5.4%	4.7%	9.7%	15.0%	8.2%	2.3%

Performance and risk characteristics

	Annualised Compound Return (%)	Annualised Volatility (%)	Sharpe Ratio
Portfolio	7.6%	9.7%	0.7
ARC Index	5.5%	8.1%	0.6
CPI +4%	6.9%	1.6%	3.8

Year-on-year performance (%)

	31 May 19 to 29 May 20	31 May 20 to 31 May 21	31 May 21 to 31 May 22	31 May 22 to 31 May 23	31 May 23 to 31 May 24
Portfolio	1.1%	21.2%	3.3%	-1.9%	14.4%
ARC Index	0.5%	15.9%	-1.7%	-1.9%	10.6%
CPI +4%	4.7%	6.3%	13.4%	13.1%	5.5%

Important Information

Past performance is not necessarily a guide to future performance. Performance is shown net of fees. Figures quoted on a bid-to-bid basis in Sterling with income reinvested. The value of your investments and the income derived from them can go down as well as up and may be affected by exchange rate fluctuations. You may not get back the original amount you invested. Investors actual returns may differ from the quoted performance data.

Source: Pacific Asset Management and Bloomberg.

PLEASE GET IN TOUCH

Pacific Asset Management
74 Wigmore Street
London, W1U 2SQ
United Kingdom

Contact us
T +44 20 3970 3100
E info@pacificam.co.uk

www.pacificam.co.uk
For more information,
updates and to find out
more please visit our website

PACIFIC
ASSET MANAGEMENT
MOVE FORWARD

IMPORTANT INFORMATION - FOR AUTHORISED USE ONLY

This document is issued and approved by Pacific Capital Partners Limited (PCP), which is authorised and regulated by the Financial Conduct Authority. This document is intended primarily for internal use, but may be distributed upon request to investment professionals and exempt investors in accordance with the FSMA 2000 (Promotion of Collective Investment Schemes Exemptions Order 2005) for authorised purposes only. It does not constitute advice, an offer or a recommendation to purchase or sell any financial products and you should not rely on the information in making an investment decision. The information and analysis contained herein are based on sources believed to be reliable. However, we do not guarantee their timeliness, accuracy or completeness, nor do we accept liability for any loss or damage resulting from your use or reliance upon this document. Any opinions expressed reflect our current judgment at the date of this document and are subject to change without notice. Past performance is not necessarily a guide to future performance. This report is not directed to or intended for distribution to or use by any person or entity in any jurisdiction where such distribution, publication or use would be unlawful. This document may not be reproduced (in whole or in part), transmitted, modified or used for any public or commercial purpose without the prior written permission of PCP. Pacific Asset Management is a trading name of PCP.